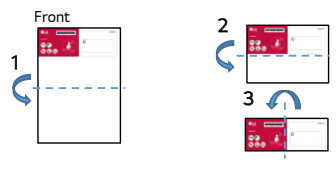
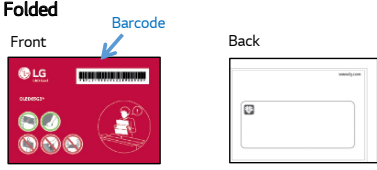


Printing Specification

1. Specification

Models	1. Model Name:	55QNE80SRA	1.1 Folding / Cover Folded Step 
	2. Suffix:	TR	
	3. Part No:	MFL71833968	
	4. REV	REV00	
SIZE	5. Number of pages	16	Folded 
	6. Folded/Unfolded	3 Folded	
	7. Trim size (W x H)_Unfolded (mm)	296 x 420 (+/-5)	
COVER	8. Trim size (W x H)_folded (mm)	148 x 105	Front Back
	9. Bindery	-	
INNER	10. Color (Cover)	-	Barcode Front Back
	11. Paper (Cover)	-	
	12. Weight (cover) (g/m ²)	-	
INNER	13. Color (inner)	4 (CMYK)	ENG (1)
	14. Paper (inner)	Wood free	
	15. Weight (inner) (g/m ²)	70 (+/-10)	
	16. Coating	No	
	17. Thomson	No	
	18. Sub-material	No	
	19. Languages		

2. Origin Notification

<p style="text-align: center;">Changes the Country name.</p> <p>Copyright © 2021 LG Electronics Inc. All Rights Reserved. Copyright © 2021 LG Electronics inc. Tous droits réservés. www.lg.com</p> <p style="text-align: center;"> Printed in Korea ← Printed in [Country Name in English] Imprimé en Corée ← Imprimé en(au)[Country Name in French] </p>	<p>[Country Name] (ENG/FRE)</p> <p>LGERS / LGEMX : Printed in Mexico Imprimé au Mexique</p> <p>LGEKR : Printed in Korea Imprimé en Corée</p> <p>LGEMA : Printed in Poland Imprimé en Pologne</p> <p>LGEND : Printed in China Imprimé en Chine</p> <p>LGEIN : Printed in Indonesia Imprimé en Indonésie</p> <p>Others : Each Country name.</p>
	<p>[Restriction of Hazardous Substances] Hazardous substances on this product should be satisfied by substance regulation of Level A-I, A-II, SVHC according to LG(52)B-5011 standard. Especially, Part should be followed and controlled the following specification. (1) Hazardous substances test report should be submitted when part certification test and first mass production. (2) Especially, Don't use or contain lead (Pb) and cadmium (Cd) in ink.</p> <p>NOTE</p> <p>INK REQUIREMENT FOR EU (1) The amount of MOAH/MOSH must be less than 0.1% of the weight of the INK used. * MOAH(Mineral Oil Aromatic Hydrocarbons) : Consisting of 1 to 7 aromatic cycles * MOSH(Mineral Oil Saturated Hydrocarbons) : Consisting of 16 to 35 carbon atoms (2) From 01 January 2025 : Ban on the use of MOAH in INK up to a limit of one part per million(1ppm) for compounds of 3 to 7 aromatic cycles</p>

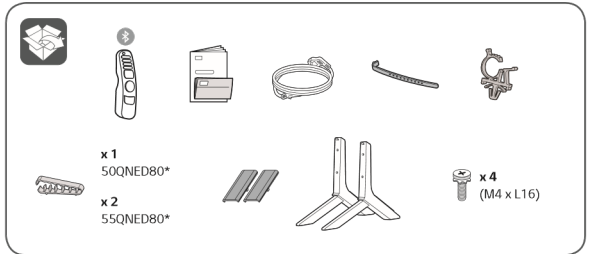
3. History

REV07					
REV06					
REV05					
REV04					
REV03					
REV02					
REV01					
REV00	03/30/2023	-	-	Checked	Nitin.H
				Approved	Santosh.C
Rev. Number	Date	Description	ECO Number	Owner	Aditya.K



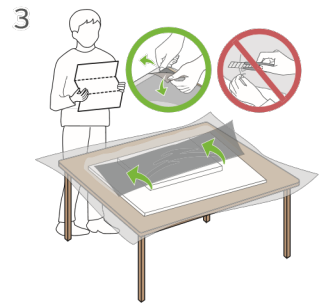
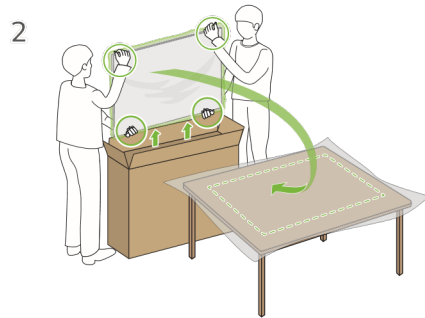
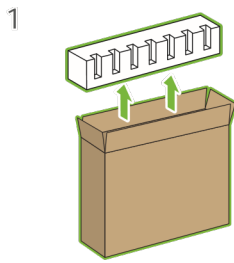
Quick Start Guide

QNED80*

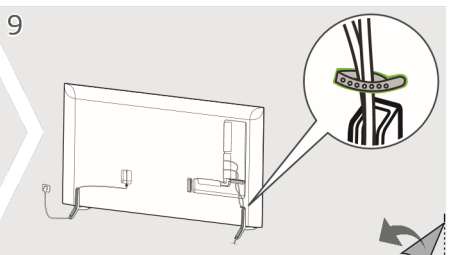
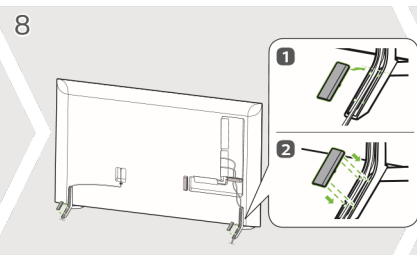
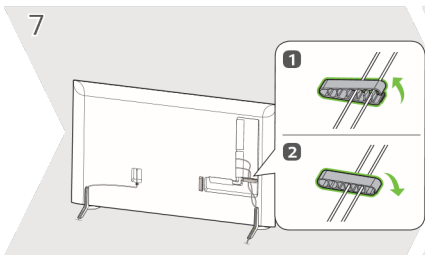
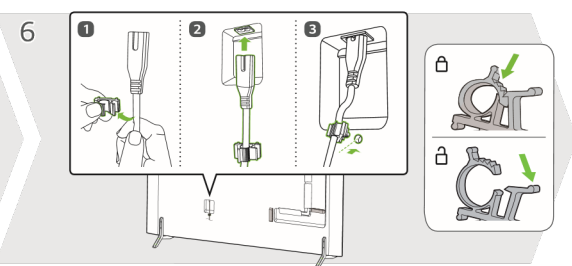
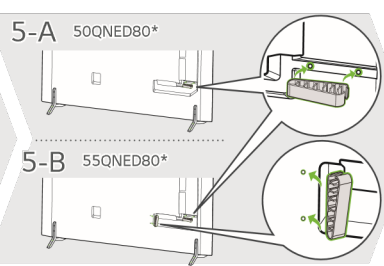
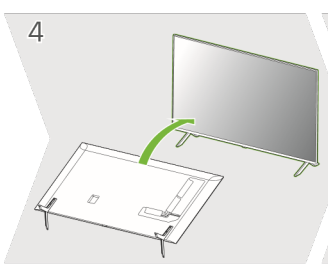
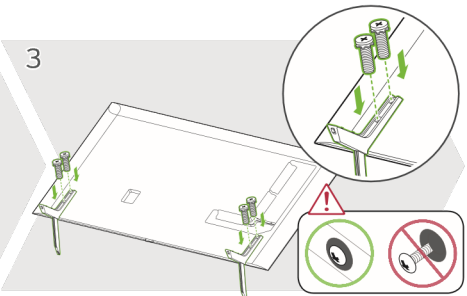
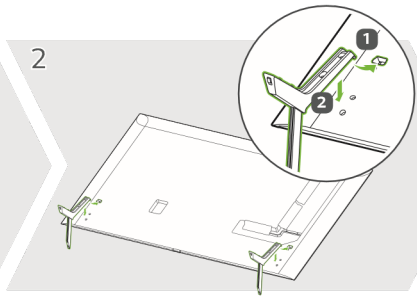
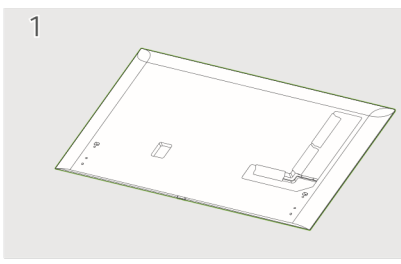


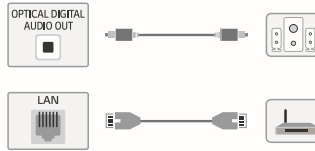
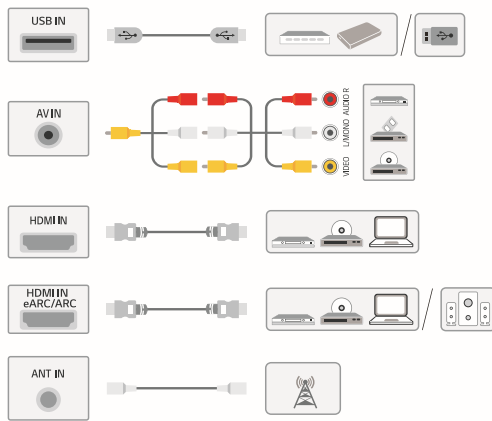
Images shown in manual may vary depending on model

Unpacking
Check your product box for the following items. If there are any missing accessories, contact the local dealer where you purchased your product. The illustrations in this manual may differ from the actual product and item.



CAUTION
Image shown may differ from your TV.
When attaching the stand to the TV set, place the screen facing down on a cushioned table or flat surface to protect the screen from scratches.





NOTE

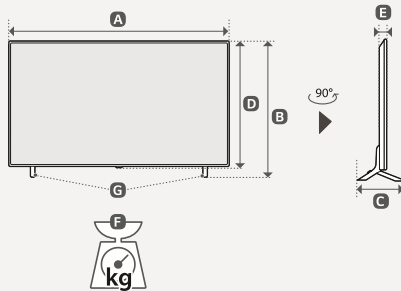
- Do not look into the optical output ports, looking at the laser beam may damage your vision.
- Audio with ACP (Audio Copy Protection) function may block digital audio output.

NOTE

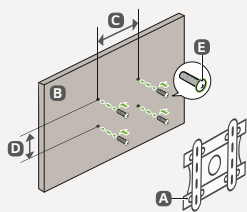
- Some USB Hubs may not work, if a USB device connected using a USB Hub is not detected, connect it to the USB port on the TV directly.
- Connect the external power source if your USB is needed.

ARC (Audio Return Channel)

An external audio device that supports SIMPLINK and ARC must be connected using HDMI IN eARC/ARC port. When connected with a high-speed HDMI cable, the external audio device that supports ARC outputs SPDIF audio without additional audio cable and supports the SIMPLINK function.



	A	B	C	D	E	F	F - G
	(mm)				(kg)		
50QNED80SRA	1123	720	257	652	29.7	13.4	13.0
55QNED80SRA	1236	783	257	716	29.7	15.3	14.9



	A	B	C x D (mm)	E
Wallmount Bracket	50QNED80*	200 x 200	M6	
	55QNED80*	300 x 300	M6	

